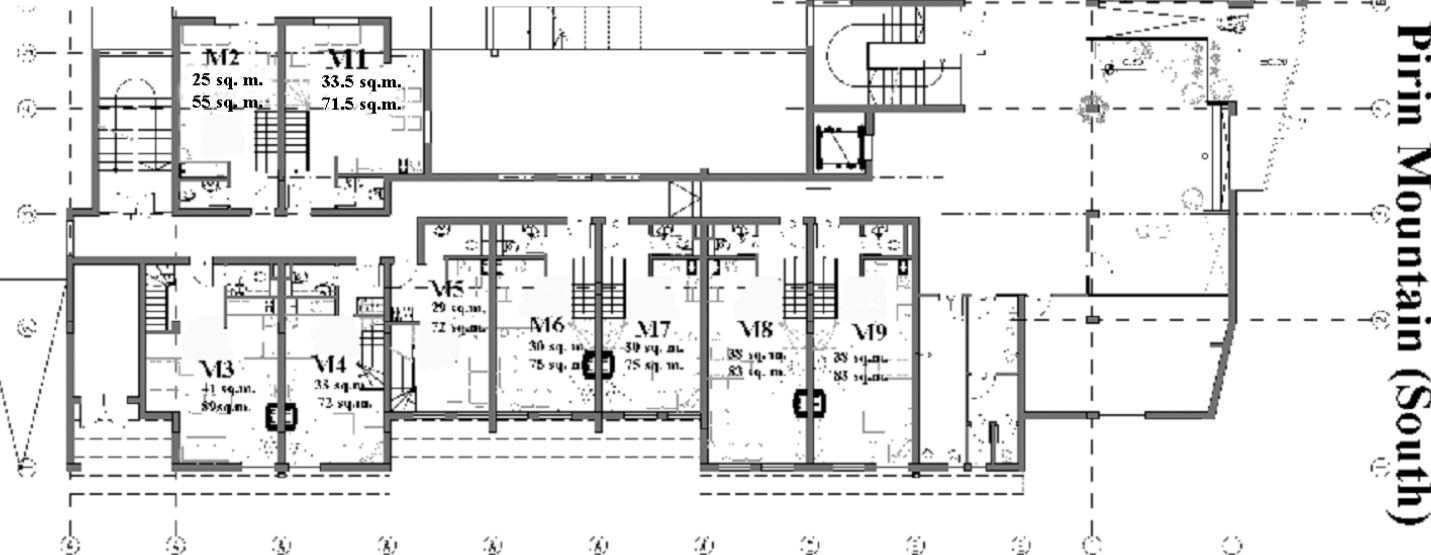


Parter Wing A Maisonette Level 1 (Two floor Apartment)					
Maisonette	sq m	Including Common Area	Euro	GBP	Availability
<b>M1</b>	<b>71.5</b>	<b>78.65</b>	<b>51122.5</b>	<b>35305</b>	<b>Reserved</b>
<b>M2</b>	<b>55</b>	<b>60.5</b>	<b>39325</b>	<b>27158</b>	<b>Reserved</b>
<b>M3</b>	<b>89</b>	<b>97.9</b>	<b>63635</b>	<b>43946</b>	<b>Reserved</b>
<b>M4</b>	<b>72</b>	<b>79.2</b>	<b>51480</b>	<b>35552</b>	<b>Reserved</b>
<b>M5</b>	<b>72</b>	<b>79.2</b>	<b>51480</b>	<b>35552</b>	<b>Reserved</b>
<b>M6</b>	<b>75.5</b>	<b>83.05</b>	<b>53982.5</b>	<b>37280</b>	<b>Reserved</b>
<b>M7</b>	<b>75.5</b>	<b>83.05</b>	<b>53982.5</b>	<b>37280</b>	<b>Reserved</b>
<b>M8</b>	<b>83.6</b>	<b>91.96</b>	<b>59774</b>	<b>41280</b>	<b>Reserved</b>
<b>M9</b>	<b>83</b>	<b>91.3</b>	<b>59345</b>	<b>40984</b>	<b>Reserved</b>

All prices are subject to VAT at the appropriate rate. please contact us for up to date availability on apartments.

Rodopes Mountain (North)



Rila Mountain (West)

PARTER  
MAISONETTE FIRST LEVEL  
BLOCK A

Glazne River (East)

**PROARK**  
www.proark.mk.com  
URBAN PLANNING  
ARCHITECTURE  
DESIGN

Pirin Mountain (South)